



**JAMEELA JAMIL**  
This peach dress and tan shoe combo is gorgeous, but then it's hard to look bad when you've got legs that go all the way up to your armpits

**CAT DEELEY**  
A Zara cape and cosy scarf keeps the chill off the So You Think You Can Dance host



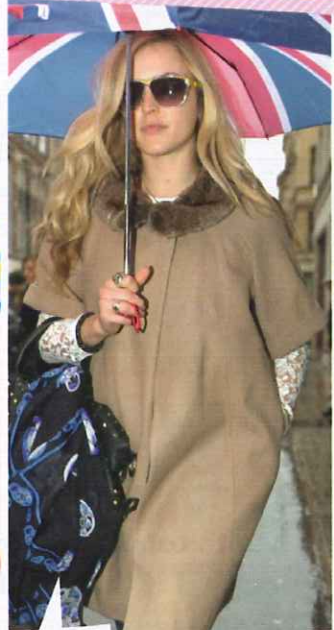
**NICKY HILTON**  
The heiress ticks off all the major labels: Chanel bag, Burberry trench and Lanvin pumps



**STELLA MCCARTNEY**  
Structured sleeves and high-waisted trousers look super-chic. Must be hell choosing from your own designer wardrobe every day

# THIS WEEK'S BEST DRESSED

URGH! THOSE JEANS, THAT TOP, THOSE SHOES... YUK! BUT ENOUGH ABOUT US - YOU LOOK GREAT!



**FEARNE COTTON**  
A souvenir-stall umbrella tops off a River Island coat. See by Chloé boots and a Meg Mathews for Liberty scarf (draped over her bag)



**LAUREN CONRAD**  
Ms Conrad wraps her curves in red-hot Hervé Léger, teamed with Christian Louboutin Very Prive platforms



**KATE MOSS**  
Kate does English country gentleness in a tweed jacket and tan shoes